



## Product Information Sheet

Reference: \_\_\_\_\_

### 流動數據產品 / Mobility Data Products

牌子/ Brand	5G CPE Pro 5
型號 / Model	5G CPE Pro 5 (H158-381)
原產地 /Place of manufacture	中國 China
網絡頻率或操作頻率或頻帶 Network frequency or operating frequency or band	5G: n1/n3/n5/n7/n8/n20/n28/n38/n40/n41/n75/n77/n78/n79/n80/n81/n82/n83/n84 4G: B1/B3/B5/B7/B8/B18/B19/B20/B26/B28/B32/B34/B38/B39/B40/B41/B42/B43 Wi-Fi: 2.4GHz: 2422-2482MHz ; 5GHz: 5170-5330MHz, 5490-5710MHz, 5735-5835MHz
主要功能 / Key features	<p>5G 高速網絡速度，體驗領先的上下傳技術</p> <ul style="list-style-type: none"> <li>• 300MHz 大頻寬，支援 NR 3CC, 最高下載速率 5.4Gbps</li> <li>• 12dBi 高增益天線</li> <li>• 上傳 3T</li> <li>• Turbo Uplink—增強 HPUE</li> <li>• Sub 3GHz 頻段，提升 5G 上傳覆蓋</li> </ul> <p>Wi-Fi 6 旗艦之選</p> <ul style="list-style-type: none"> <li>• AX7200: 160MHz &amp; 4K QAM</li> <li>• Dual-band 4*4 MIMO</li> <li>• 最多可連接 128 部設備</li> </ul> <p>智能體驗全屋無縫高速連線</p> <ul style="list-style-type: none"> <li>• Wi-Fi Mesh+，超級組網</li> <li>• 智能診斷網絡狀況，時刻通暢</li> <li>• WTTT 及 FTTH 融合切換，更加穩定</li> </ul> <p>Unmatched 5G Network Speed in Downlink Uplink</p> <ul style="list-style-type: none"> <li>• 300 MHz Bandwidth NR 3CC, 5.4Gbps Peak Speed</li> <li>• 12 dBi High Antenna Gain in the industry</li> <li>• Uplink 3T</li> <li>• Turbo Uplink – Enhance HPUE for Better Uplink</li> <li>• Sub 3GHz Band to improve 5G Uplink Coverage</li> </ul> <p>Wi-Fi 6 - Choice of Flagship</p> <ul style="list-style-type: none"> <li>• AX7200: 160MHz &amp; 4K QAM</li> <li>• Dual-band 4*4MIMO</li> <li>• Connect up to 128 devices</li> </ul> <p>Seamless Wi-Fi Experience throughout Housing Network</p> <ul style="list-style-type: none"> <li>• Wi-Fi Mesh+</li> <li>• Home Wi-Fi Network Visualization</li> <li>• WTTT and FTTH Convergence</li> </ul>
SIM card 種類 / SIM card	Single Nano SIM (5G / 4G)
數據傳輸/網絡連接制式 Data transfer/network connectivity protocol	<p>WAN: 3GPP Release 16; 4G DL Cat20/UL Cat18 DL MIMO 5G 4x4: n1/n3/n7/n38/n40/n41/n77/n78/n79 5G 2x2: n5/n8/n20/n28/n75/n80/n81/n82/n83/n84 4G 4x4: B1/B3/B7/B32/B38/B39/B40/B41/B42/B43 4G 2x2: B5/B8/B18/B19/B20/B26/B28/B34 LAN: IEEE 802.3/802.3u-compatible One 2.5GE port for LAN/WAN, One GE port for LAN</p>



	Wi-Fi: 802.11 b/g/n/a/ac/ax 2.4GHz Wi-Fi 4x4 MIMO up to 1376 Mbps 5GHz Wi-Fi 4x4 MIMO up to 5764 Mbps Maximum Users: 64+64
配套 / Packaging List	1 x 主機 / Wireless Gateway 1 x 電源線 / Power supply adapter 1 x 快速指南 / Quick Start Guide 1 x 網絡線 / Ethernet cable
產品價格 / Price	請參照銷售備忘錄/發票 As per Sales Memo/Invoice
附加費 / Additional Delivery Charge	指定地區/ 地址 (如離島) 有可能需付額外送貨附加費 Additional delivery charge may be added for specific area/ location (e.g. outlying island)
保修人身份 / Identity of repair service provider	香港移動通訊有限公司 CSL Mobile Limited
保修地址 / Repair service address	(1) csl 旺角西洋菜南街專門店 地址: 旺角西洋菜南街 2J - 2Q, 新江大樓 1 樓及地下 8 號舖 營業時間: 星期一至六, 日及公眾假期: 10:30-22:00 (2) csl 銅鑼灣怡和街專門店 地址: 香港銅鑼灣怡和街 22 號 1 樓, 2 樓及地下 1 & 2 號舖 營業時間: 星期一至四: 10:30 - 21:30 星期五, 六, 日及公眾假期: 10:30-22:00 (1) csl Shop - Mong Kok Sai Yeung Choi Street South Address: Shop 8, G/F & 1/F, Sun Kong House, 2J - Q Sai Yeung Choi Street South, Mongkok, Kowloon. Business Hours: Mon-Sat, Sun & PH: 10:30 - 22:00 (2) csl Shop - Causeway Bay Yee Wo Street Address: Shop 1 & 2 G/F, 1/F & 2/F, No. 22 Yee Wo Street, Causeway Bay, Hong Kong Business Hours: Business Hours: Mon-Thu: 10:30 - 21:30 Fri, Sat, Sun & PH: 10:30 - 22:00
換貨政策 / Exchange policy	你可於銷售單日期起計 14 天之內攜同流動通訊設備到我們的門市更換一次, 詳情請參閱銷售單之條款及細則。 You may exchange the Mobile Equipment once within 14 days of the date of Sales Memo by returning the Mobile Equipment to our shops. Please refer to the terms and conditions on the Sales Memo for details. 於銷售單日期起計 14 天之後, 客戶如需維修, 請前往 csl 旺角店 或 銅鑼灣店。 Customers shall visit csl Mongkok or Causeway Bay Flagship stores for repair service after 14 days of the date of Sales Memo.
保修期 Warranty period	機身 / Main Unit      12 個月 / 12 months 配件 / Accessory      電源線 / Power supply adapter: 6 個月 / 6 months

上述產品資料摘錄自生產商/供應商文獻及/或由生產商/供應商所提供之資料

The above information is extracted from literature and / or information on this product by manufacturer / supplier

Hong Kong Telecommunications (HKT) Limited / CSL Mobile Limited 香港移動通訊有限公司

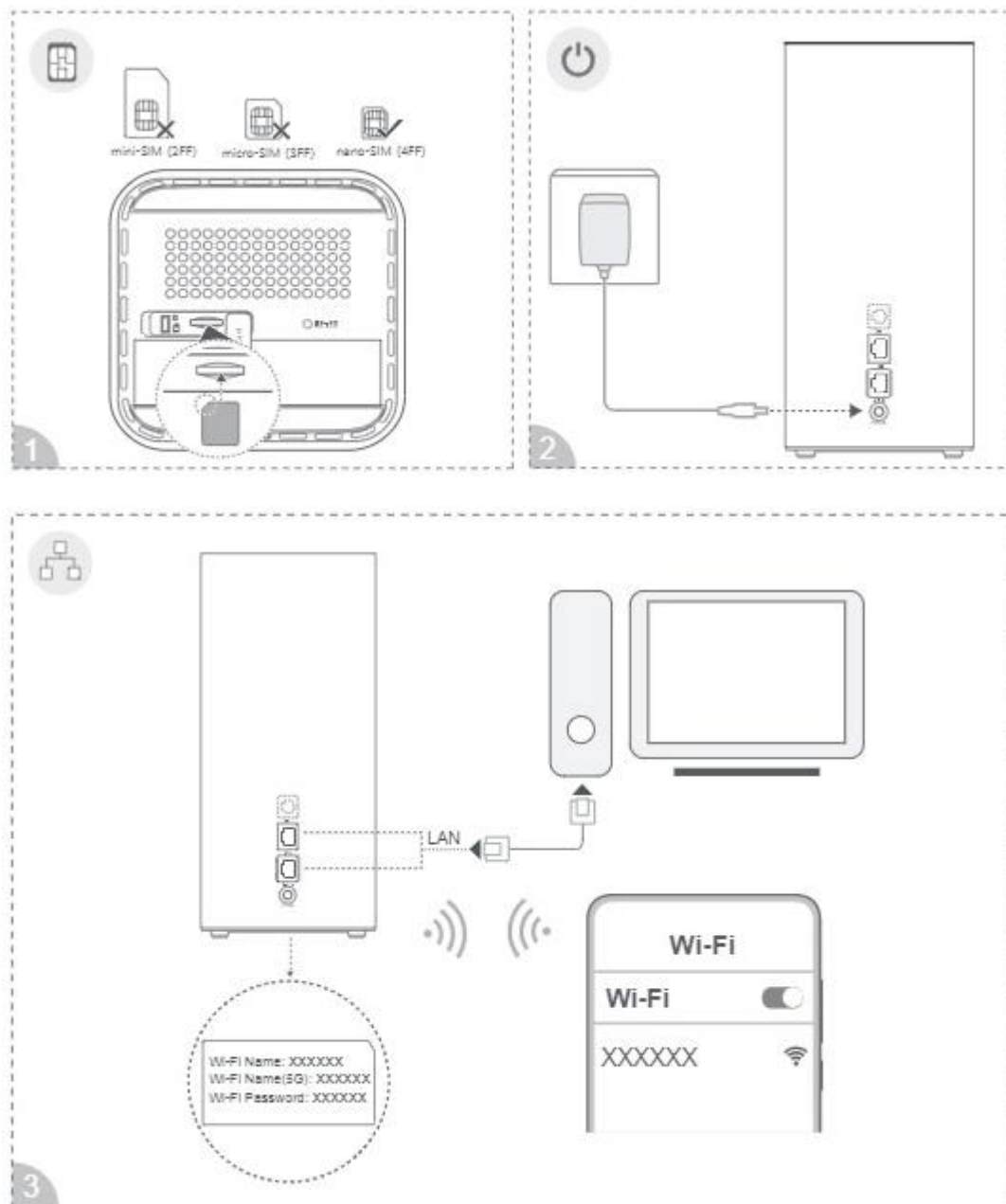
查詢熱線 Enquiry hotline: 2512 3123

<http://hkcsl.com>

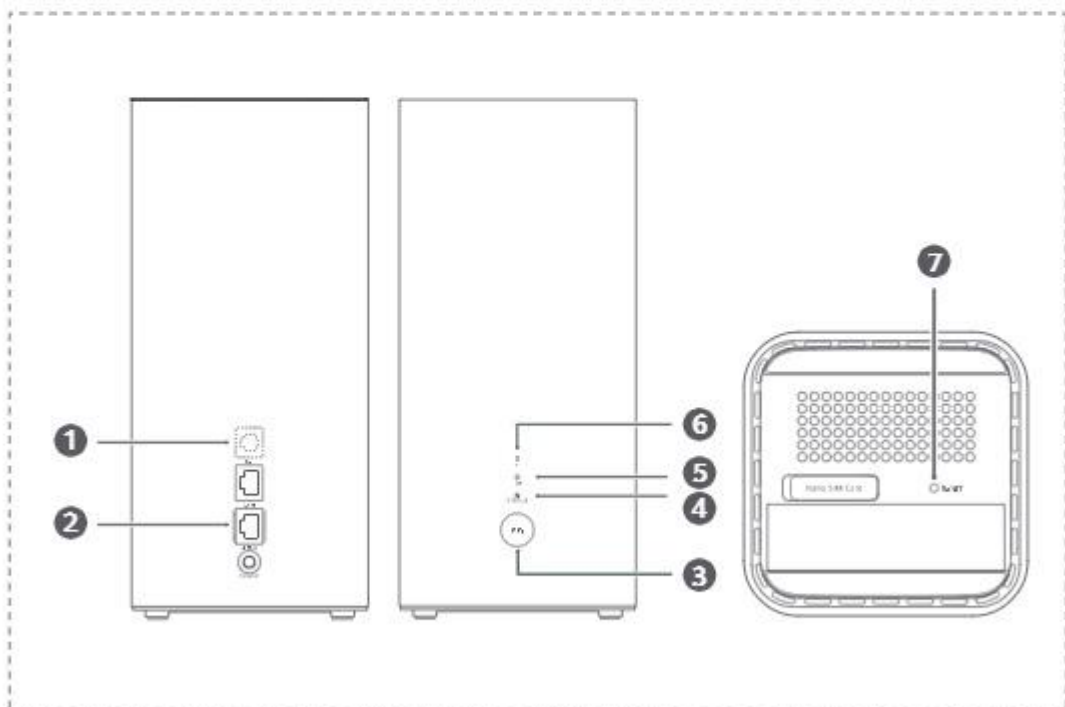
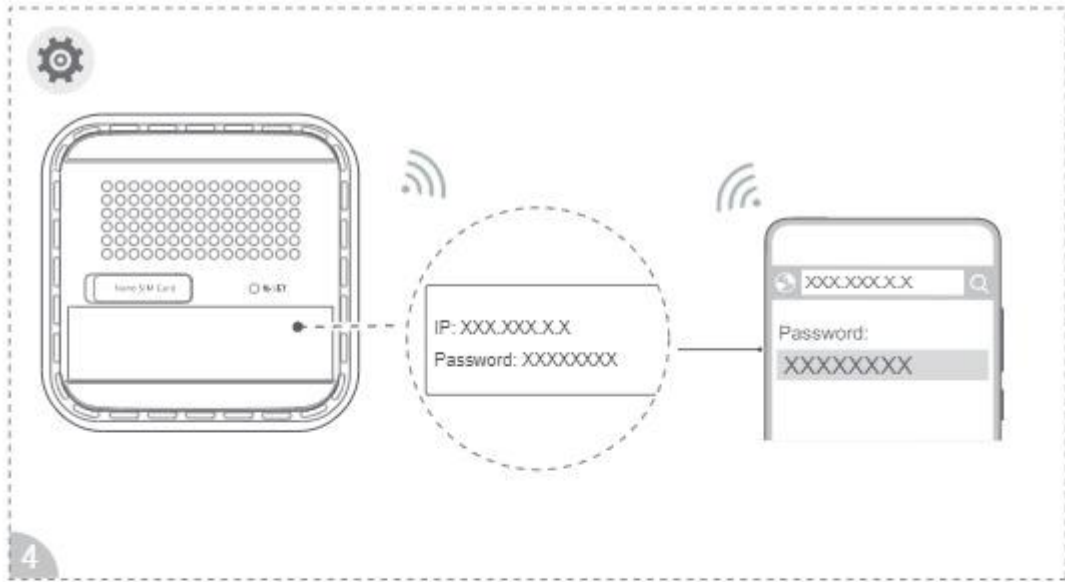


## Product Information Sheet

### 快速入門 / Quick Start Guide



## Product Information Sheet






## Product Information Sheet

### Getting started

- 1 Insert a proper SIM card into the SIM card slot.
- 2 Connect the router's power adapter to a power supply. The router will then start up automatically and connect to the Internet.
- 3 Connect your Wi-Fi device to the Wi-Fi network of the router. For the default Wi-Fi name and password, refer to the nameplate on the router. If you are using a computer, connect the computer to the LAN port of the router using a network cable.
- 4 Log in to the web-based management page to manage your router, such as for changing the Wi-Fi name or password. For details about the default IP address and login password, refer to the nameplate on the router.

### Overview

❶	Landline phone port(Optional. The actual product appearance and functions prevail.)	Connect to a telephone.
❷	LAN/WAN port	<ul style="list-style-type: none"><li>• Connect a LAN device to the router to access the Internet, such as a computer or switch.</li><li>• Connect the router to a wall-mounted Ethernet port for Internet access.</li></ul>
❸	WPS button	When Wi-Fi is enabled, press to enable the WPS or HiLink connection.  If you accidentally press the WPS button and the network status indicator starts to flash, wait until it stops flashing. This may take about two minutes.
❹	Network status indicator	Steady blue: Connected to network. Flash blue: Detected a pairable device. Steady red: Not connected to network.
❺	4G signal indicator	Steady blue: Strong. Steady yellow: Moderate. Steady red: Weak.
❻	5G signal indicator	Steady blue: Strong. Steady yellow: Moderate. Steady red: Weak.
❼	Reset button	When the router is powered on, use a needle-type object to press and hold the Reset button, until the ambient light strip starts to flash. Release the button, and the router will restore to its factory settings.

### Legal Notice

The product described in this manual may include copyrighted software of licensors. Customers shall not in any manner reproduce, distribute, modify, decompile, disassemble, decrypt, extract, reverse engineer, lease, assign, or sublicense the said software, unless such restrictions are prohibited by applicable laws or such actions are approved by respective copyright holders.

### Trademarks and Permissions

LTE is a trademark of ETSI.

Wi-Fi®, the Wi-Fi CERTIFIED logo, and the Wi-Fi logo are trademarks of Wi-Fi Alliance.

Other trademarks, product, service and company names mentioned may be the property of their respective owners.

### Notice

Some features of the product and its accessories described herein rely on the software installed, capacities and settings of local network, and therefore may not be activated or may be limited by local network operators or network service providers. Thus, the descriptions herein may not exactly match the product or its accessories which you purchase.

We reserve the right to change or modify any information or specifications contained in this manual without prior notice and without any liability.

### DISCLAIMER

ALL CONTENTS OF THIS MANUAL ARE PROVIDED "AS IS". EXCEPT AS REQUIRED BY APPLICABLE LAWS, NO WARRANTIES OF ANY KIND, EITHER EXPRESS OR IMPLIED, INCLUDING BUT NOT LIMITED TO, THE IMPLIED WARRANTIES OF MERCHANTABILITY AND FITNESS FOR A PARTICULAR PURPOSE, ARE MADE IN RELATION TO THE ACCURACY, RELIABILITY OR CONTENTS OF THIS MANUAL.

TO THE MAXIMUM EXTENT PERMITTED BY APPLICABLE LAWS, IN NO EVENT SHALL ZOWEE BE LIABLE FOR ANY SPECIAL, INCIDENTAL, INDIRECT, OR CONSEQUENTIAL DAMAGES, OR LOSS OF PROFITS, BUSINESS, REVENUE, DATA, GOODWILL SAVINGS OR ANTICIPATED SAVINGS REGARDLESS OF WHETHER SUCH LOSSES ARE FORESEEABLE OR NOT.

THE MAXIMUM LIABILITY (THIS LIMITATION SHALL NOT APPLY TO LIABILITY FOR PERSONAL INJURY TO THE EXTENT APPLICABLE LAW PROHIBITS SUCH A LIMITATION) OF ZOWEE ARISING FROM THE USE OF THE PRODUCT DESCRIBED IN THIS MANUAL SHALL BE LIMITED TO THE AMOUNT PAID BY CUSTOMERS FOR THE PURCHASE OF THIS PRODUCT.





## Product Information Sheet

### Import and Export Regulations

Customers shall comply with all applicable export or import laws and regulations and be responsible to obtain all necessary governmental permits and licenses in order to export, re-export or import the product mentioned in this manual including the software and technical data therein.

### Privacy Policy

To learn how we use and protect your personal information on this device, please access the web-based management page, and read the Privacy Statement for Mobile Broadband Devices to learn about our privacy policy.

### Software Update

By continuing to use this device, you indicate that you have read and agree to the following content:

In order to provide better service, this device will automatically obtain software update information from ZOWEE or your carrier after connecting to the Internet. This process will use mobile data, and require access to your device's unique identifier (SN) and the service provider network ID (PLMN) to check whether your device needs to be updated.

This device supports the automatic update feature. Once enabled, the device will automatically download and install critical updates from ZOWEE or your carrier. This feature is enabled by default, and can be configured from the settings menu on the web-based management page.

### Safety information

This section contains important information about the operation of your device. It also contains information about how to use the device safely. Read this information carefully before using your device.

#### Electronic device

Do not use your device if using the device is prohibited. Do not use the device if doing so causes danger or interference with other electronic devices.

#### Interference with medical equipment

- Follow rules and regulations set forth by hospitals and health care facilities. Do not use your device where prohibited.
- Some wireless devices may affect the performance of hearing aids or pacemakers. Consult your service provider for more information.
- Pacemaker manufacturers recommend that a minimum distance of 15 cm be maintained between a device and a pacemaker to prevent potential interference with the pacemaker. If using a pacemaker, hold the device on the side opposite the pacemaker and do not carry the device in your front pocket.

#### Areas with flammables and explosives

- Do not use the device where flammables or explosives are stored (in a gas station, oil depot, or chemical plant, for example). Using your device in these environments increases the risk of explosion or fire. In addition, follow the instructions indicated in text or symbols.
- Do not store or transport the device in containers with flammable liquids, gases, or explosives.

#### Operating environment

- Avoid dusty, damp, or dirty environments. Avoid magnetic fields. Using the device in these environments may result in circuit malfunctions.
- Before connecting and disconnecting cables, stop using the device and disconnect it from the power supply. Ensure that your hands are dry during operation.
- Place the device on a stable surface.
- Keep the device away from electronic appliances that generate strong magnetic or electric fields, such as a microwave oven or refrigerator.
- During thunderstorms, power off your device and remove all cables connected to it to protect against lightning strikes.
- Do not use your device during thunderstorms to protect your device against any danger caused by lightning.
- Ideal operating temperatures are 0 °C to 40 °C. Ideal storage temperatures are -20 °C to +70 °C. Extreme heat or cold may damage your device or accessories.
- Keep the device and accessories in a well-ventilated and cool area away from direct sunlight. Do not enclose or cover your device with towels or other objects. Do not place the device in a container with poor heat dissipation, such as a box or bag.
- To protect your device or accessories from fire or electrical shock hazards, avoid rain and moisture.
- Keep the device away from sources of heat and fire, such as a heater, microwave oven, stove, water heater, radiator, or candle.
- Do not place any object, such as a candle or a water container on the device. If any foreign object or liquid enters the device, immediately stop using it, power it off, and remove all cables connected to it.
- Do not block device openings. Reserve a minimum of 10 cm around the device to dissipate heat.
- Stop using your device or applications for a while if the device is overheated. If skin is exposed to an overheated device for an extended period, low temperature burn symptoms, such as red spots and darker pigmentation, may occur.
- Do not touch the device's antenna. Otherwise, communication quality may be reduced.
- Do not allow children or pets to bite or suck the device or accessories. Doing so may result in damage or explosion.
- Observe local laws and regulations, and respect the privacy and legal rights of others.
- The device should be installed and operated with a minimum distance of 50 cm between the radiator and your body.
- Keep the device in a place with good reception. The distance between the device and other metal materials (such as metal brackets or metal doors and windows) should be greater than 25 cm and the distance between the device should be greater than 30 cm.

## Product Information Sheet

### Child safety

- Comply with all precautions with regard to child safety. Letting children play with the device or its accessories may be dangerous. The device includes detachable parts that may present a choking hazard. Keep away from children.
- The device and its accessories are not intended for use by children. Children should only use the device with adult supervision.

### Accessories

- Using an unapproved or incompatible power adapter, charger or battery may cause fire, explosion or other hazards.
- Choose only accessories approved for use with this model by the device manufacturer. The use of any other types of accessories may void the warranty, may violate local regulations and laws, and may be dangerous. Please contact your retailer for information about the availability of approved accessories in your area.

### Power adapter safety

- The power plug is intended to serve as a disconnect device.
- For pluggable devices, the socket-outlet shall be installed near the devices and shall be easily accessible.
- Unplug the power adapter from electrical outlets and the device when not in use.
- Do not drop or cause an impact to the power adapter.
- If the power cable is damaged (for example, the cord is exposed or broken), or the plug loosens, stop using it at once. Continued use may lead to electric shocks, short circuits, or fire.
- Do not touch the power cord with wet hands or pull the power cord to disconnect the power adapter.
- Do not touch the device or the power adapter with wet hands. Doing so may lead to short circuits, malfunctions, or electric shocks.
- Ensure that the power adapter meets the requirements of IEC/EN 62368-1 and has been tested and approved according to national or local standards.
- Warning: This equipment may not work when mains power fails.

### Cleaning and maintenance

- During storage, transportation, and operation of the device, keep it dry and protect it from collision.
- Keep the device and accessories dry. Do not attempt to dry it with an external heat source, such as a microwave oven or hair dryer.
- Do not expose your device or accessories to extreme heat or cold. These environments may interfere with proper function and may lead to fire or explosion.
- Avoid collision, which may lead to device malfunctions, overheating, fire, or explosion.
- If the device is not going to be used for an extended period of time, power it off, and remove all cables connected to it.
- If anything unusual occurs (for example, if the device emits smoke or any unusual sound or smell), immediately stop using it, power it off, and remove all cables connected to it.
- Do not trample, pull, or excessively bend any cable. Doing so may damage the cable, causing the device to malfunction.
- Before you clean or maintain the device, stop using it, stop all applications, and disconnect all cables connected to it.
- Do not use any chemical detergent, powder, or other chemical agents (such as alcohol and benzene) to clean the device or accessories. These substances may cause damage to parts or present a fire hazard. Use a clean, soft, and dry cloth to clean the device and accessories.
- Do not place magnetic stripe cards, such as credit cards and phone cards, near the device for extended periods of time. Otherwise the magnetic stripe cards may be damaged.
- Do not dismantle or remanufacture the device and its accessories. This voids the warranty and releases the manufacturer from liability for damage.

### Disposal and recycling information



The symbol on the product, battery, literature, or packaging means that the products and batteries should be taken to separate waste collection points designated by local authorities at the end of the lifespan. This will ensure that EEE waste is recycled and treated in a manner that conserves valuable materials and protects human health and the environment. For more information, please contact your local authorities, retailer, or household waste disposal service or visit the website <https://www.brovi-tech.com>.

### Reduction of hazardous substances

This device and its electrical accessories comply with local applicable rules on the restriction of the use of certain hazardous substances in electrical and electronic equipment, such as EU REACH regulation, RoHS and Batteries (where included) directive. For declarations of conformity about REACH and RoHS, please visit the website <https://www.brovi-tech.com>.

### EU regulatory conformance

#### Statement

Hereby, ZOWEE TECHNOLOGY (HEYUAN) CO., LTD. declares that this device H158-381 is in compliance with the essential requirements and other relevant provisions of Directive 2014/53/EU.

The most recent and valid version of the DoC (Declaration of Conformity) can be viewed at <https://www.brovi-tech.com>.

This device may be operated in all member states of the EU.

Observe national and local regulations where the device is used.

This device may be restricted for use, depending on the local network.



## Product Information Sheet

### Restrictions in the 5 GHz band:

The 5150 to 5350 MHz frequency range is restricted to indoor use in: AT, BE, BG, CH, CY, CZ, DE, DK, EE, EL, ES, FI, FR, HR, HU, IE, IS, IT, LI, LT, LU, LV, MT, NL, NO, PL, PT, RO, SE, SI, SK, TR, UK(NI).

In accordance with the relevant statutory requirements in the UK, the 5150 to 5350 MHz frequency range is restricted to indoor use in the United Kingdom.

### ErP Product Information

ZOWEE TECHNOLOGY (HEYUAN) CO., LTD. hereby declares that its products conform to the Energy-related Products Directive (ErP) 2009/125/EC. For detailed ErP information and the user manuals required by Commission Regulation, please visit: <https://www.brovi-tech.com>.

### Frequency Bands and Power

(a) Frequency bands in which the radio equipment operates: Some bands may not be available in all countries or all areas. Please contact the local carrier for more details.

(b) Maximum radio-frequency power transmitted in the frequency bands in which the radio equipment operates: The maximum power for all bands is less than the highest limit value specified in the related Harmonized Standard. The frequency bands and transmitting power (radiated and/or conducted) nominal limits applicable to this radio equipment are as follows: LTE Band 1/3/7/8/20/28/34/38/40: 25.7 dBm, LTE Band 42/43: 26 dBm, 5G NR SA Band n3/n8/n20/n28/n38/n80/n81/n82/n83/n84: 25.7 dBm, 5G NR SA Band n1/n7: 26 dBm, 5G NR SA Band n40/n41/n77/n78: 29 dBm, 5G NR NSA Band n3/n8/n20/n28/n38: 25.7 dBm, 5G NR NSA Band n1/n7/n40/n77: 26 dBm, 5G NR NSA Band n41/n78: 29 dBm, Wi-Fi 2.4GHz: 20 dBm, Wi-Fi 5G: 5150-5250 MHz: 23 dBm, 5250-5350 MHz: 23 dBm, 5470-5725 MHz: 30 dBm.

### Accessories and Software Information

Some accessories are optional in certain countries or regions. Optional accessories can be purchased from a licensed vendor as required. The following accessories are recommended:

Adapters: S120300D00

The product software version is 2.1.0.1(H1220SP1C00). Software updates will be released by the manufacturer to fix bugs or enhance functions after the product has been released. All software versions released by the manufacturer have been verified and are still compliant with the related rules.

All RF parameters (for example, frequency range and output power) are not accessible to the user, and cannot be changed by the user.

For the most recent information about accessories and software, please see the DoC (Declaration of Conformity) at <https://www.brovi-tech.com>.



## Product Information Sheet

### 入門

- 1 將合適的 SIM 卡插入 SIM 卡插槽。
- 2 將路由器的電源配接器連接至電源。路由器將會自動啟動並連線至互聯網。
- 3 將 Wi-Fi 裝置連線至路由器的 Wi-Fi 網絡。請參閱路由器上的標示牌，了解預設的 Wi-Fi 名稱和密碼。如果您使用的是電腦，請使用網線將電腦連接至路由器的 LAN 連接埠。
- 4 登入網頁端路由器管理網頁管理您的路由器，例如修改 Wi-Fi 名稱或密碼。請參閱路由器上的標示牌，了解預設的 IP 位址和登入密碼。

### 概述

①	有線電話連接埠（可選，以實際外觀和功能為準）	連接至電話機。
②	LAN/WAN 連接埠	<ul style="list-style-type: none"> <li>將電腦、交換器等 LAN 裝置連接至路由器以存取互聯網。</li> <li>將路由器連接至牆上的乙太網絡埠以存取互聯網。</li> </ul>
③	WPS 按鍵	當 Wi-Fi 已啟用時，按下啟用 WPS 連線或 HiLink 連線。 <b>i</b> 如果不小心按下 WPS 按鍵，網絡狀態指示燈將會開始閃爍。請耐心等待，指示燈會在約兩分鐘後停止閃爍。
④	網絡狀態指示燈	藍燈長亮：已連線至網絡。 藍燈閃爍：偵測到可配對裝置。 紅燈長亮：未連線至網絡。
⑤	4G 訊號指示燈	藍燈長亮：強 黃燈長亮：中 紅燈長亮：弱
⑥	5G 訊號指示燈	藍燈長亮：強 黃燈長亮：中 紅燈長亮：弱
⑦	重設按鍵	在路由器開機的狀態下，使用針狀物體長按重設按鍵，直至氛圍燈條開始閃爍。 鬆開按鍵，路由器將會恢復至出廠設定。

### 法律聲明

本手冊描述的產品當中，可能包含許可人受版權保護的軟件。除非獲得相關版權持有人的許可，否則任何人均不能以任何形式對上述軟件作出以下侵犯軟件版權的行為：複製、分發、修改、反編譯、反組譯、解密、擴錄、逆向工程、租賃、轉讓、再授特許等，惟適用法禁止此等限制者除外。

### 商標和許可

LTE 是歐洲電信標準協會 ETSI 的商標。

Wi-Fi、Wi-Fi CERTIFIED 和 Wi-Fi 標誌是 Wi-Fi 聯盟的商標。

在本手冊以及本手冊描述的產品中所出現的其他商標、產品名稱、服務名稱以及公司名稱，均由其各自的所有人擁有。

### 注意

本手冊描述的產品及其配件的某些特性和功能，會因當地網絡的設計和效能以及您安裝的軟件而有所不同。某些特性和功能可能由於當地網絡供應商或網絡服務供應商不支援、當地網絡的設定，或者您安裝的軟件不支援而無法提供。因此，本手冊中的描述可能與您購買的產品或其配件並非完全——對應。

我們保留隨時修改本手冊中任何資訊的權利，無需提前通知且不承担任何責任。

### 責任限制

本手冊中的內容均「按照現狀」提供。除非適用法律要求，否則我們對本手冊中的所有內容均不提供任何明示或暗示的保證，包括但不限於可銷售性或適用於某個特定目的之保證。

在適用法律允許的範圍內，卓翼在任何情況下，都不對因使用本手冊相關內容及本手冊描述的產品而產生的任何特殊、附帶、間接或繼發性損害作出賠償，也不對任何利潤、數據、商譽或預期節約的損失作出賠償。

在相關法律允許的範圍內，卓翼在任何情況下，對您因為使用本手冊描述的產品而遭受的損失之最大責任（除在涉及人身傷害的情況中根據適用的法律規定的損害賠償外）以您購買本產品所支付的價款為限。

## Product Information Sheet

### 進出口管制

如需將本手冊中描述的產品（包括但不限於產品中的軟件及技術數據等）出口、再出口或者進口，您應遵守適用的進出口管制法律法規。

### 私隱保護

如需了解我們如何在本裝置上使用和保護您的個人資訊，請前往網頁端管理頁面閱讀《無線寬頻裝置私隱聲明》。

### 軟件更新

繼續使用本裝置，即表示您已閱讀並同意以下內容：

為了提供更好的服務，本裝置將在連線網絡後自動從卓翼或您的供應商處取得軟件更新資訊。此過程將會使用流動數據，並要求存取裝置的唯一識別碼（SN）和服務供應商網絡 ID（PLMN），以檢查裝置是否需要更新。

本裝置支援自動更新功能。啟用後，裝置會自動從卓翼或您的供應商處下載和安裝重要更新。此功能預設為啟用，您可以在網頁端管理頁面的設定功能表中作設定。

### 安全資訊

本節包含如何操作及安全使用本裝置的資訊。在使用本裝置前，請仔細閱讀以下注意事項。

#### 電子裝置

在禁止使用本裝置的場景，以及使用本裝置會導致干擾或危險的情況下，請勿使用本裝置。

#### 對醫療裝置的干擾

- 遵循醫院及衛生保健設施制定的規章制度。請勿在禁止使用本裝置的地方使用。
- 某些無線裝置可能會影響助聽器或起搏器的效能，請向其製造商查詢使用本裝置的限制條件。
- 起搏器製造商建議裝置和起搏器之間最少保持 15 厘米距離，以免對起搏器造成潛在干擾。如果使用起搏器，請將裝置放在起搏器對面的一側，請勿將裝置放在前口袋中。

#### 易燃和易爆區域

- 請勿在存放易燃或易爆品的區域（例如油站、油庫、化工廠）使用本裝置。在這些環境中使用本裝置會增加爆炸或火災的可能性。此外，請遵循文字或符號指示說明。
- 禁止將裝置存放在裝有易燃液體、氣體或爆炸物的容器中。

#### 運行環境

- 請勿在多灰塵、潮濕、航勝或靠近磁場的地方使用裝置，以免引起裝置內部電路故障。
- 連接和中斷纜線前，請停止使用裝置，並中斷裝置與電源的连接。操作過程中，請務必確保雙手乾爽。
- 請將裝置放置在平穩的工作檯上。
- 安放裝置時，請遠離具有強磁場或強電場的電器，例如微波爐、雪櫃等。
- 在雷電天氣下，請中斷電源並拔出連接至裝置的所有纜線，以免導致裝置故障或電擊危險。
- 請勿在雷雨天氣下使用本裝置，以免導致裝置故障或電擊危險。
- 理想運作環境溫度：0° C 至 40° C；理想儲存溫度：-20° C 至 70° C。如果環境溫度過高或過低，可能會導致裝置或配件故障。
- 請將裝置及配件放在通風良好、陰涼的環境中，避免陽光直射。請勿使用毛巾或其他物品包裹或覆蓋您的裝置。請勿將裝置放置在盒子或袋子等不利散熱的容器中。
- 請儘量避免雨水和潮濕環境，以保護您的裝置或配件免受火災或電擊危險。
- 請使裝置遠離熱源和火源，例如取暖設備、微波爐、煮食爐、熱水器、散熱器或燈燭等。
- 請勿在裝置上放置任何物體，例如蠟燭或水容器等。如有異物或液體進入裝置，請立即停止使用裝置並中斷電源，然後拔出連接至裝置的所有纜線。
- 請勿堵塞裝置的開口。請在裝置四周留出 10 厘米以上的散熱空間。
- 如果裝置過熱，請暫時停止使用裝置或應用程式。如果裝置溫度過高，請勿長時間接觸，否則可能導致低溫燙傷，引起皮膚紅腫或色素沉澱。
- 請勿觸摸裝置天線，否則通訊質素可能會降低。
- 請勿讓兒童或寵物啃咬或吸吮裝置或配件，以免造成損壞或爆炸。
- 請遵守當地法律法規，尊重他人的私隱和合法權利。
- 在本裝置的安裝和操作過程中，輻射單元和人體之間的最短距離為 50 厘米。
- 請將裝置放置在訊號接收良好的地方。裝置與其他金屬物品（如金屬支架、金屬門窗等）的距離應該遠於 25 厘米，與其他電子裝置之間的距離應該遠於 30 厘米。

#### 兒童安全

- 請遵守所有與兒童保護有關的防範措施。請勿讓兒童玩弄裝置和小配件，避免因吞嚥等行為而產生危險。請將裝置及其配件放置在兒童接觸不到的地方。
- 本裝置及其配件並非玩具，兒童應在成人監護下使用本裝置。

## Product Information Sheet

### 配件

- 使用未經批准或不相容的電源配接器、充電器或電池可能會導致火災、爆炸或其他危險。
- 請使用裝置製造商授權的配套配件。如果使用其他類型的配件，可能違反本裝置的保養條款及本裝置所處國家或地區的相關規定，並可能導致安全事故。請與您的零售商聯絡，了解您所在國家或地區可用配件的相關資訊。

### 電源配接器安全性

- 電源插頭用於中斷電源連接。
- 為方便使用可插拔裝置，應當選擇裝置附近且方便觸及的插座。
- 不充電時，請中斷電源配接器與裝置的連接，並從電源插座上拔掉電源配接器。
- 避免電源配接器跌落或受到撞擊。
- 如果電源線損壞（如電源線外露或斷裂）或插頭鬆動，請立即停止使用，否則可能會導致觸電、短路或火災。
- 請勿用濕手接觸電源線，或者透過拉電夾中斷電源配接器與插座的連接。
- 請勿用潮濕的手觸摸裝置和電源配接器，否則可能會導致短路、故障或觸電。
- 電源配接器必須符合 IEC/EN 62368-1 的要求並已根據國家或地方標準完成測試和審批。
- 警告：當電源停電時，本裝置可能無法運作。

### 清潔和維護

- 在裝置的儲存、運輸和操作過程中，請保持裝置乾爽，防止碰撞。
- 請保持裝置及配件乾爽。請勿使用微波爐或風筒等外部加熱裝置烘乾裝置。
- 請勿將裝置或配件暴露在極端高溫或寒冷的環境中。這些環境可能會干擾正常功能，並可能會導致火災或爆炸。
- 請避免碰撞裝置。碰撞可能會導致裝置故障或過熱，或導致火災或爆炸。
- 如果您長時間不使用裝置，請中斷其電源，並拔出連接至裝置的所有纜線。
- 如果裝置出現冒煙、聲音異常、有異味等異常現象，請立刻停止使用並中斷電源，然後拔出連接至裝置的所有纜線。
- 請勿踐踏、拉扯或過度屈曲任何纜線。損壞纜線可能會導致裝置故障。
- 清潔和維護前，請先停止使用本裝置和所有應用程式，並拔出連接至裝置的所有纜線。
- 請勿使用任何化學洗滌劑、粉末或其他化學製劑（如酒精和苯）清潔本裝置或配件。這些物質可能會對零件造成損壞或引發火災危險。請使用清潔、乾爽的軟布擦拭裝置及其配件。
- 請勿長時間將信用卡和電話卡等磁條卡放置在裝置附近，以免磁條卡損壞。
- 請勿拆開或重新製造本裝置及其配件，否則保養將會失效，製造商亦將不會承擔裝置損壞的責任。

### 處置和回收資訊



您的產品、電池、文獻或包裝上的標誌代表在產品和電池使用壽命結束時，您應將其帶往不同的廢棄物收集點集中棄置。正確收集和回收您的裝置，有助於確保以保存珍貴材料和保護人體健康與環保的方式回收電器和電子裝置（EEE）。如需取得更多資訊，請向您當地的主管機構、零售商或家庭垃圾處理服務商查詢，或者瀏覽

<https://www.brovi-tech.com>。

### 減少有害物質

本裝置及其電氣配件符合適用於當地關於限制電氣和電子裝置中使用某些危險物質的相關規定，例如歐盟的 REACH 法案、RoHS 指令及電池指令（如包括）等。如欲查閱 REACH 和 RoHS 的符合性聲明，請瀏覽

<https://www.brovi-tech.com>。

### 歐盟法規遵從

#### 聲明

卓翼科技（河源）有限公司特此聲明：本裝置 H158-381 符合第 2014/53/EU 號指令的基本要求及其他相關條例的規定。

如需有關最新生效的符合性聲明（DoC）檔案，請瀏覽 <https://www.brovi-tech.com>。本裝置可以在歐盟的所

有成員國正常操作和使用。

請遵守本國及當地的裝置使用管理規定。

本裝置的使用情況可能受當地網絡情況限制。

#### 5 GHz 頻段限制：

當本裝置在 5150 至 5350 MHz 頻率範圍內操作時，僅限室內使用。此限制適用於：奧地利、比利時、保加利亞、瑞士、塞浦路斯、捷克、德國、丹麥、愛沙尼亞、希臘、西班牙、芬蘭、法國、克羅地亞、匈牙利、愛爾蘭、冰島、意大利、列支敦士登、立陶宛、盧森堡、拉脫維亞、馬耳他、荷蘭、挪威、波蘭、葡萄牙、羅馬尼亞、瑞典、斯洛文尼亞、斯洛伐克、土耳其、英國（北愛爾蘭）。





## Product Information Sheet

根據英國相關法定要求，在英國，5150 至 5350 MHz 頻段僅限室內使用。

### ErP 產品資訊

卓翼科技（河源）有限公司特此聲明，其產品符合能源相關產品指令（ErP）2009/125/EC。如欲查閱聯盟法規的詳細 ErP 資訊和用戶手冊，請瀏覽：<https://www.brovi-tech.com>。

### 頻段和功率

1. 無線電裝置運作的頻段：某些頻段可能並非所有國家或地區都能使用。如需詳細資訊，請向當地供應商查詢。
2. 在無線電裝置運作頻段內發射的最大無線電頻率功率：所有頻段的最大功率低於相關協議標準中規定的最高限值。

適用於本無線電裝置的頻段和發射功率（輻射和/或傳導）標稱限制如下。LTE 頻段 1/3/7/8/20/28/34/38/40：25.7 dBm；LTE 頻段 42/43：26 dBm；5G NR SA 頻段 n3/n8/n20/n28/n38/n80/n81/n82/n83/n84：25.7 dBm；5G NR SA 頻段 n1/n7：26 dBm；5G NR SA 頻段 n40/n41/n77/n78：29 dBm；5G NR NSA 頻段 n3/n8/n20/n28/n38：25.7 dBm；5G NR NSA 頻段 n1/n7/n40/n77：26 dBm；5G NR NSA 頻段 n41/n78：29 dBm；Wi-Fi 2.4G：20 dBm；Wi-Fi 5G：5150–5250 MHz：23 dBm；5250–5350 MHz：23 dBm；5470–5725 MHz：30 dBm。

### 配件和軟件資訊

在某些國家或地區，部分配件為可選配件。您可以根據需要，從許可供應商處購買可選配件。建議使用以下配件：

配接器：S120300D00

產品軟件版本為 2.1.0.1（H1220SP1C00）。產品發佈後，製造商將發佈軟件更新以修復缺陷或增強功能。廠商發佈的所有軟件版本均經過驗證，且符合相關規定。

用戶不可存取或修改任何射頻參數（如頻率範圍、輸出功率等）。

如需了解配件及軟件的最新資訊，請瀏覽 <https://www.brovi-tech.com>，並閱讀我們的符合性聲明（DoC）檔案。